



South Park Drive, Ilford, IG3 9AB

£600,000 Freehold

Great opportunity! completely refurbished mid terrace house with OFF ROAD PARKING, THREE BEDROOMS, TWO RECEPTIONS, KITCHEN & UTILITY ROOM, modern bathroom to first floor and shower room on the ground floor. South Park Drive is well-positioned, offering easy access to local amenities, schools, and transport links, making it an excellent choice for families and commuters alike. This home presents a wonderful opportunity in a vibrant community. Do not miss the chance to make this charming property your own. VACANT POSSESSION! NO ONWARD CHAIN! CALL 020 8530 4646 NOW TO VIEW.



Reception Hallway

12'5" x 4'11" (3.79 x 1.52)

Ground Floor Shower Room

6'8" x 4'3" (2.05 x 1.32)

Utility Room

7'4" x 6'9" (2.24 x 2.08)

Reception One

12'8" x 11'10" (3.88 x 3.61)

Reception Two

15'11" x 10'1" (4.87 x 3.08)

Kitchen

13'11" x 8'6" (4.25 x 2.61)

FIRST FLOOR LANDING AREA

5'9" x 3'11" (1.76 x 1.21)

Bedroom

15'10" x 9'8" (4.83 x 2.96)

Bedroom

12'8" x 10'4" (3.87 x 3.15)

Bedroom Three

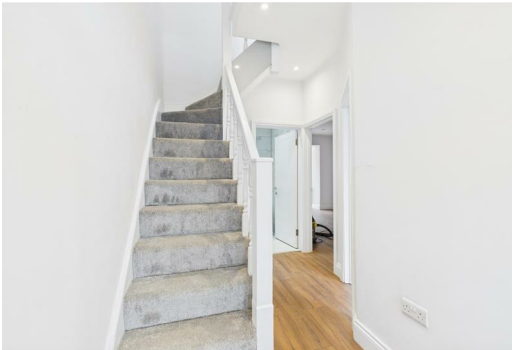
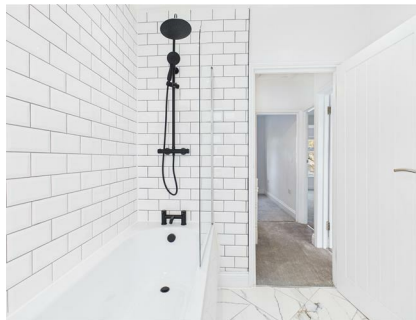
9'10" x 7'3" (3.02 x 2.23)

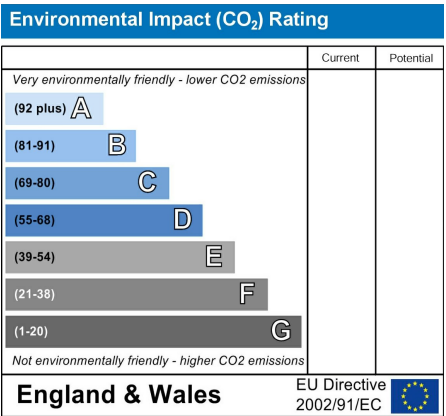
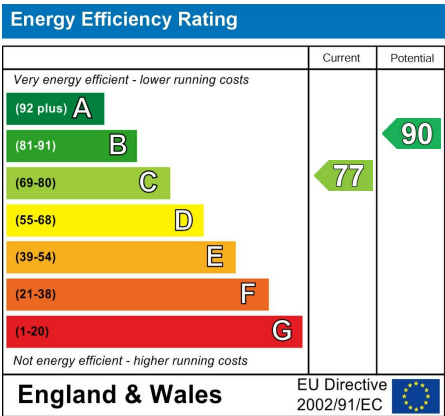
Bathroom

7'8" x 6'8" (2.35 x 2.05)

Disclaimer

Whilst every care has been taken to ensure the accuracy of these particulars, such accuracy cannot be guaranteed, and therefore does not constitute any part of an offer or contract. The agent has not tested any apparatus, equipment, fixtures , fittings or services and so does not verify they are in working order, fit for purpose, or within ownership of the sellers, therefore the buyer cannot assume any information is correct. Photographs of the interior of the property are given purely to give an indication of décor, style etc., and does not imply that any furniture/fittings etc., are included.







Approximate total area^m

954 ft²

88.7 m²

(1) Excluding balconies and terraces

Calculations reference the RICS IPMS 3C standard. Measurements are approximate and not to scale. This floor plan is intended for illustration only.

GIRAFFE360

